

APPLICATIONS

Jacket cooling fresh water pumps

Sea water service pumps

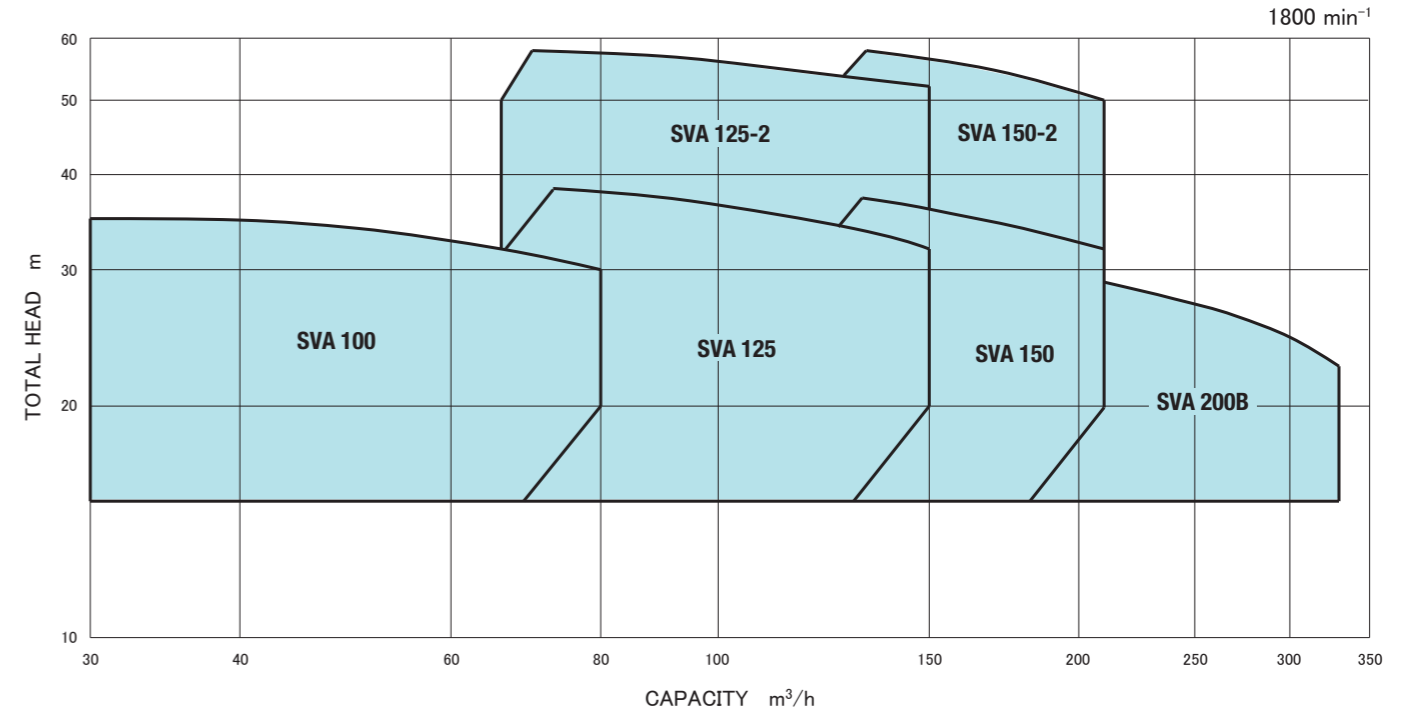
Other use

GENERAL CHARACTERISTICS (SINGLE SUCTION)

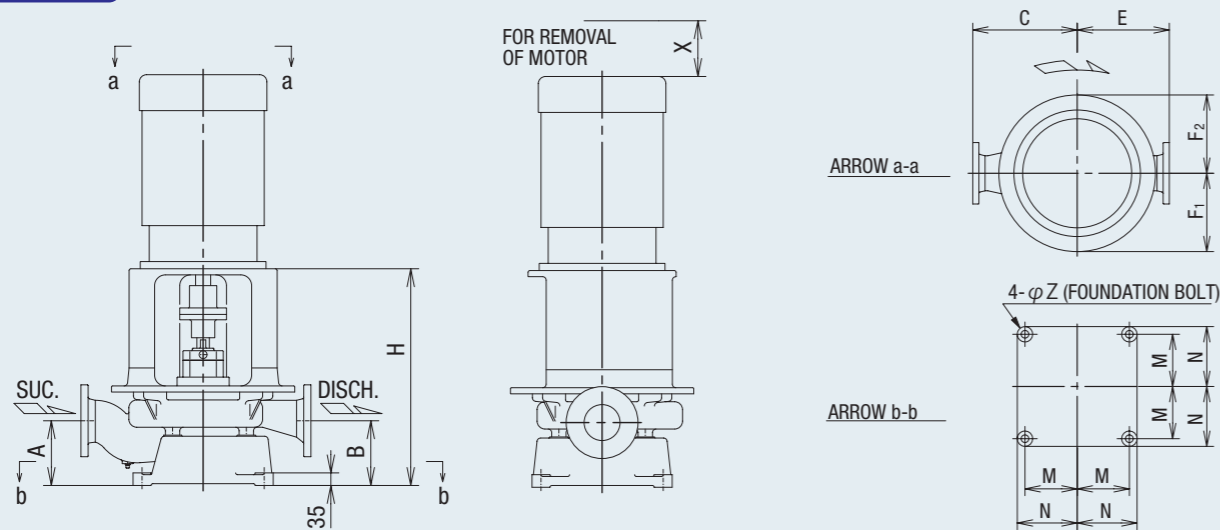
Item	Model	SVA 100	SVA 125	SVA 125-2	SVA 150	SVA 150-2	SVA 200B
Rotation		Clockwise when viewed from the driver					
Suction bore (mm)		100	125	125	150	150	200
Discharge bore (mm)		100	125	125	150	150	200
Stuffing box seal		Gland packing or Mechanical seal					
Max.output (kW)		15	22	37	30	45	30
weight:CAC (kg)		175	195	270	230	280	235
weight:FC (kg)		165	175	250	210	260	215
Water filled in casing (kg)		6	18	26	25	33	37



PERFORMANCE CHARTS



SVA 100~200B



Dimensions:mm

Model	A	B	C	E	F ₁	F ₂	H	M	N	X	Z	Mecha. seal
SVA 100	180	180	340	300	255	255	609	170	195	170	25	35
SVA 125	190	190	380	320	255	255	629	170	195	170	25	35
SVA 125-2	220	220	420	350	310	310	718	210	240	200	27	45
SVA 150	215	215	420	360	255	270	700	210	240	170	27	45
SVA 150-2	215	215	460	390	310	310	715	210	240	200	27	45
SVA 200B	215	215	410	380	260	290	724	210	240	170	27	45

APPLICATIONS

Cooling sea water pumps

Cooling fresh water pumps

Turbo generator condenser C.S.W. pumps

Vaccum condenser C.S.W. pumps

Inert gas scrubber C.S.W. pumps

Reliquefaction C.F.W. pumps

Central cooling sea water pumps

Central cooling fresh water pumps

Ballast pumps

Others

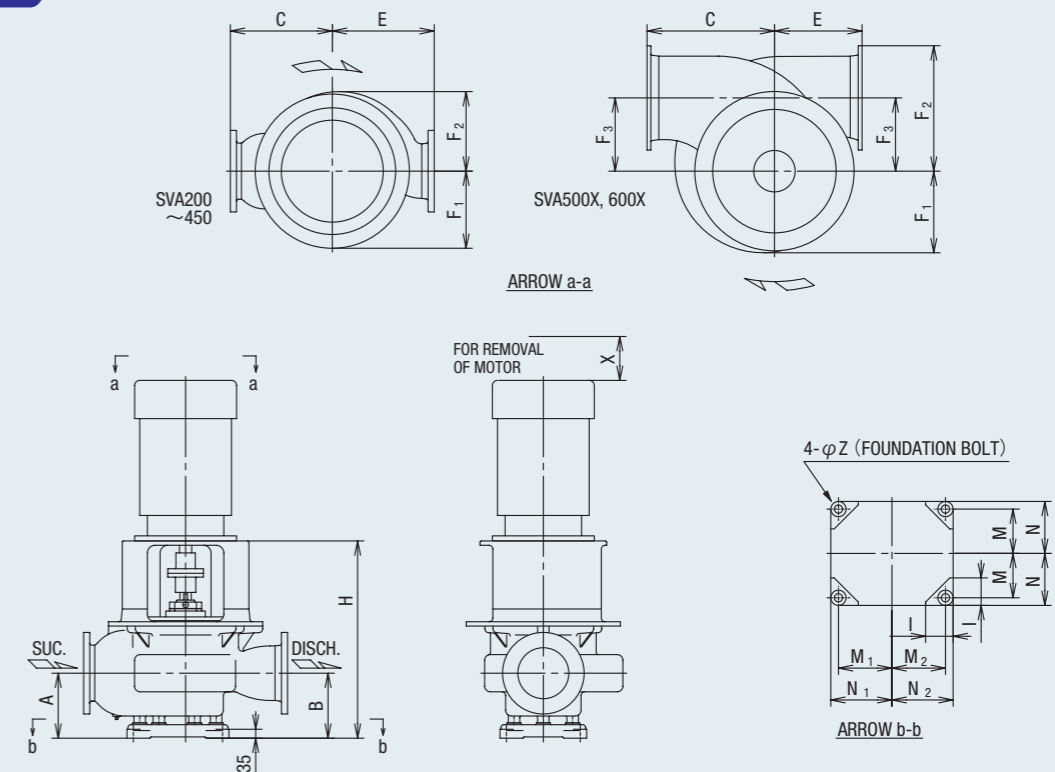


GENERAL CHARACTERISTICS (DOUBLE SUCTION)

Item	Model	SVA 200	SVA 250B	SVA 250(A)	SVA 300B	SVA 300(A)
Rotation		Clockwise when viewed from the driver				
Suction bore	(mm)	200	250	250	300	300
Discharge bore	(mm)	200	250	250	300	300
Stuffing box seal		Gland packing or Mechanical seal				
Max.output	(kW)	45	55	90	75	132
weight:CAC	(kg)	360	300	460	350	570
weight:FC	(kg)	310	260	400	315	510
Water filled in casing	(kg)	51	76	90	101	125

Item	Model	SVA 350B	SVA 350(A)	SVA 400(A)	SVA 450	SVA 500X	SVA 600X
Rotation		Clockwise when viewed from the driver					
Suction bore	(mm)	350	350	400	450	500	600
Discharge bore	(mm)	350	350	400	450	500	600
Stuffing box seal		Gland packing or Mechanical seal					
Max.output	(kW)	110	150	280	315	460	600
weight:CAC	(kg)	420	730	1160	1600	1800	2370
weight:FC	(kg)	380	675	1050	1450	1640	2160
Water filled in casing	(kg)	126	195	315	438	668	850

SVA 200~600X

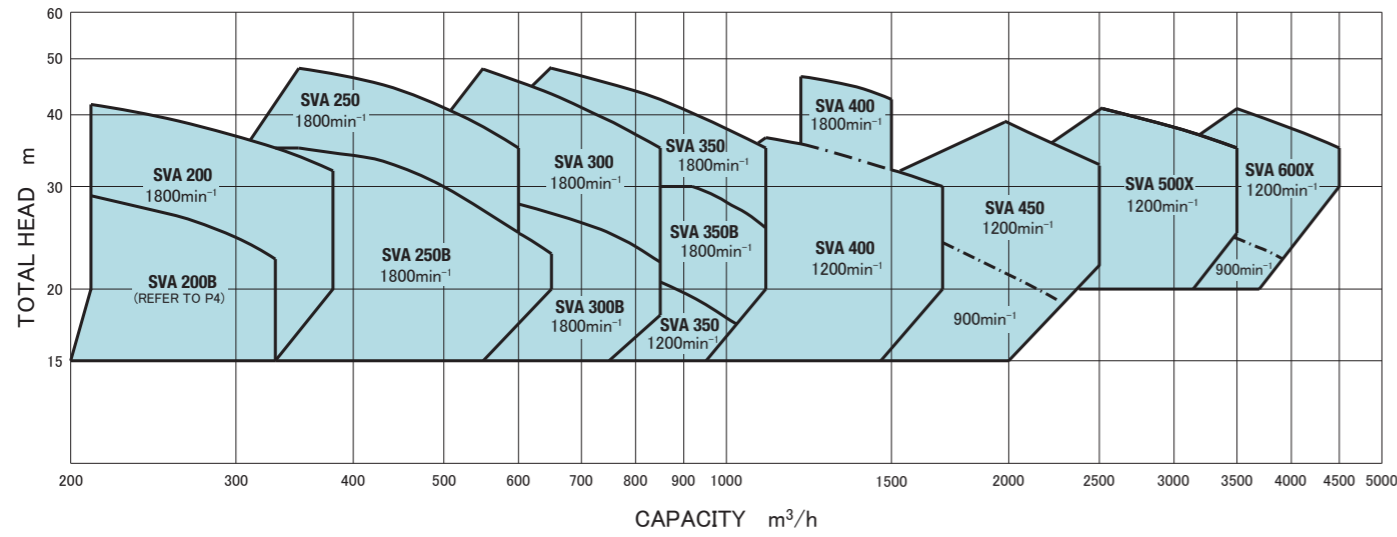


Dimensions:mm

Model	A	B	C	E	F ₁	F ₂	F ₃	H	I	M	M ₁	M ₂	N	N ₁	N ₂	X	Z	Mecha. seal
SVA 200	255	255	400	400	305	315	—	810	90	145	205	145	170	230	170	200	27	45
SVA 250B	290	290	400	400	285	310	—	879	—	190	180	180	215	205	205	200	27	45
SVA 250(A)	290	290	430	430	305	350	—	881	90	180	240	180	210	270	210	200	27	55
SVA 300B	300	300	430	430	285	360	—	911	—	215	200	200	245	230	230	200	33	55
SVA 300(A)	325	325	470	470	310	390	—	941	110	200	275	200	230	305	230	200	33	55
SVA 350B	305	305	430	440	330	370	—	976	—	230	200	200	260	230	230	200	33	55
SVA 350(A)	355	355	480	480	365	380	—	1031	110	235	300	235	265	330	265	230	33	60
SVA 400(A)	410	410	600	580	430	495	—	1171	110	275	355	275	305	385	305	230	33	70
SVA 450	500	500	730	710	414	598	—	1454	150	340	440	340	380	480	380	300	39	85
SVA 500X	580	580	800	550	515	790	460	1764	170	425	425	425	470	470	470	300	46	115
SVA 600X	670	670	950	600	542	885	500	1913	190	500	500	500	550	550	550	300	52	115

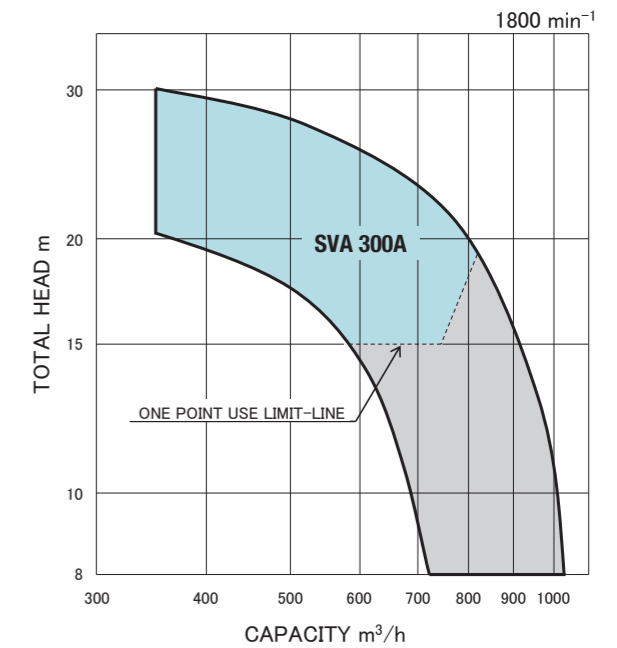
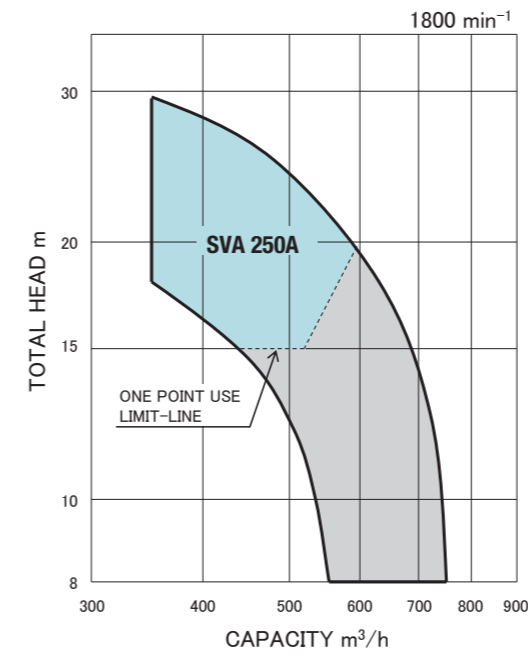
PERFORMANCE CHARTS

For Cooling Sea Water Pumps and Cooling Fresh Water Pumps (SVA)



For Cooling Sea Water Pumps and COPT Condenser Cooling Pumps with a Double Specification (SVA-A)

Pumps should be used intermittently when they are run in the gray-colored zones on the charts below.



For Turbo Generator Condenser Cooling Pumps (SVA)

