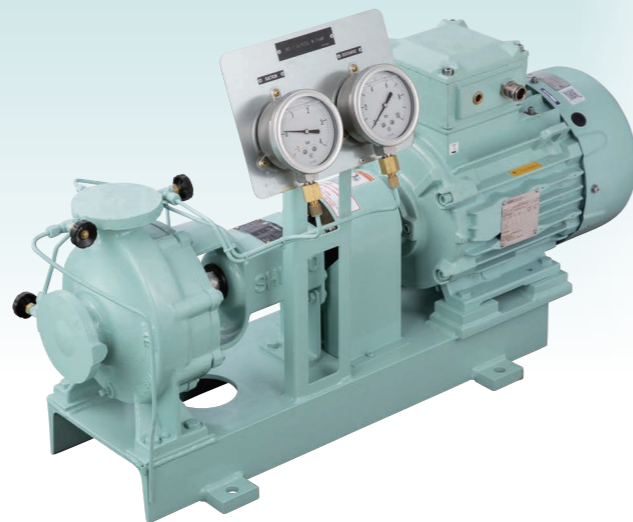


APPLICATIONS

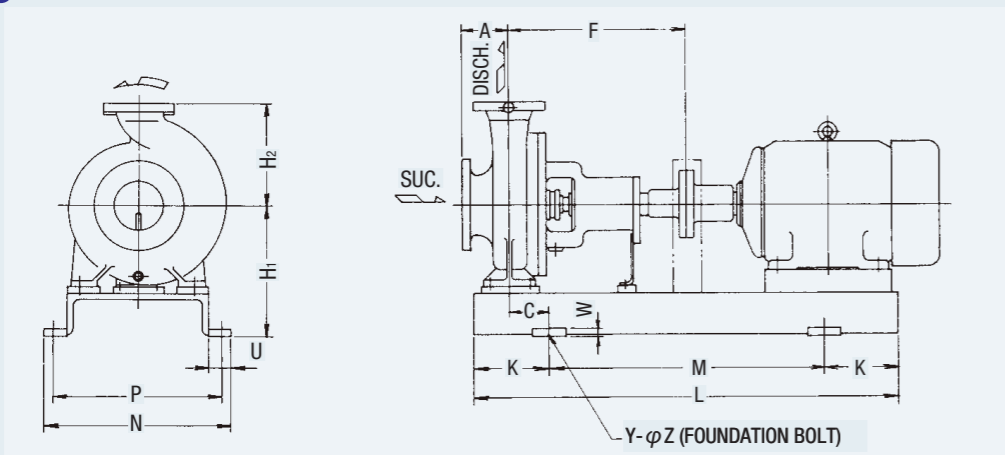
- Air conditioning ref. cooling water pumps
- Refrigerator cooling water pumps
- Miscellaneous cooling water pumps
- Fresh water generator ejector pumps
- Other use



GENERAL CHARACTERISTICS

Item	Model	GJ 40-20	GJ 40-25	GJ 50-20	GJ 50-25	GJ 80-20	GJ 80-25
Rotation		Clockwise when viewed from the driver					
Suction bore (mm)		50	50	80	80	100	100
Discharge bore (mm)		40	40	50	50	80	80
Stuffing box seal		Gland packing or Mechanical seal					
Max.output (kW)		11	18.5	18.5	30	7.5	15
weight:CAC (kg)		140	151	145	161	186	232
weight:FC (kg)		132	141	136	150	174	219
Water filled in casing (kg)		1.6	2.1	2.8	3.4	4.8	5.8

GJ 40-20~80-25



Dimensions:mm

Model	Bore		Motor frame NO.	A	C	F	H ₁	H ₂	K	L	M	N	P	U	W	Y	Z	Mecha. seal
	Suc.	Disch.																
GJ 40-20	50	40	90L	100	55	385	265	180	115	700	470	335	295	42.5	20	4	19	30
			160M	100	90	385	265	180	150	910	610	385	345	42.5	20	4	19	
GJ 40-25	50	40	90L	100	57.5	390	285	225	130	710	450	385	345	42.5	20	4	19	30
			160L	100	97.5	390	285	225	170	970	630	385	345	42.5	20	4	19	
GJ 50-20	80	50	90L	100	55	385	265	200	115	700	470	335	295	42.5	20	4	19	30
			160L	100	90	385	265	200	150	950	650	385	345	42.5	20	4	19	
GJ 50-25	80	50	132S	125	77.5	390	285	225	150	810	510	385	345	42.5	20	4	19	30
			180L	125	117.5	390	285	225	190	1040	660	385	345	42.5	20	4	19	
GJ 80-20	100	80	112M	125	57.5	405	285	250	130	780	520	385	345	42.5	20	4	19	30
			180L	125	117.5	405	285	250	190	1060	680	385	345	42.5	20	4	19	
GJ 80-25	100	80	132M	125	60	434	340	280	150	910	610	465	425	42.5	20	4	19	40
			160L	125	80	434	340	280	170	1040	700	465	425	42.5	20	4	19	

PERFORMANCE CHARTS

When this model is used for pumps with a total head below 30m, such as air conditioning refrigerator cooling pumps, the revolution of the electric motor is 1800min⁻¹ and the upper chart should be referred to.

On the other hand, when this model is used for pumps with a total head over 30m, such as fresh water generator ejector pumps, the speed of the electric motor is 3600min⁻¹ and lower chart should be referred to.

If the rated point is within the performance chart, even when the total head is between 20~30m, the lower chart for 3600min⁻¹ can also be used.

