

DK100-8M

SHINKO IND. LTD.
Horizontal eight-stage single-suction
BOILER FEED PUMPS

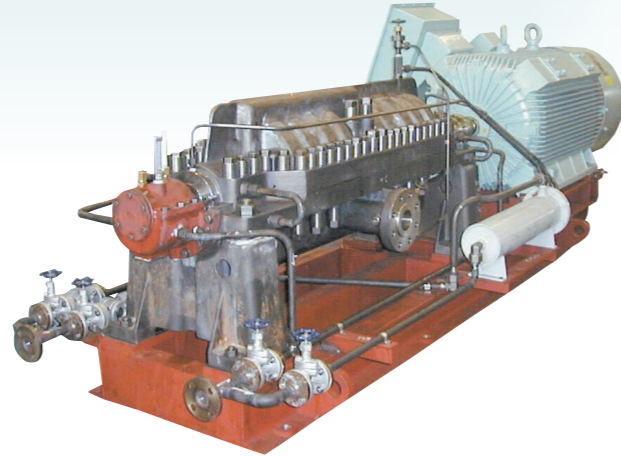
DK100-8M | Horizontal eight-stage single-suction
BOILER FEED PUMPS

APPLICATIONS

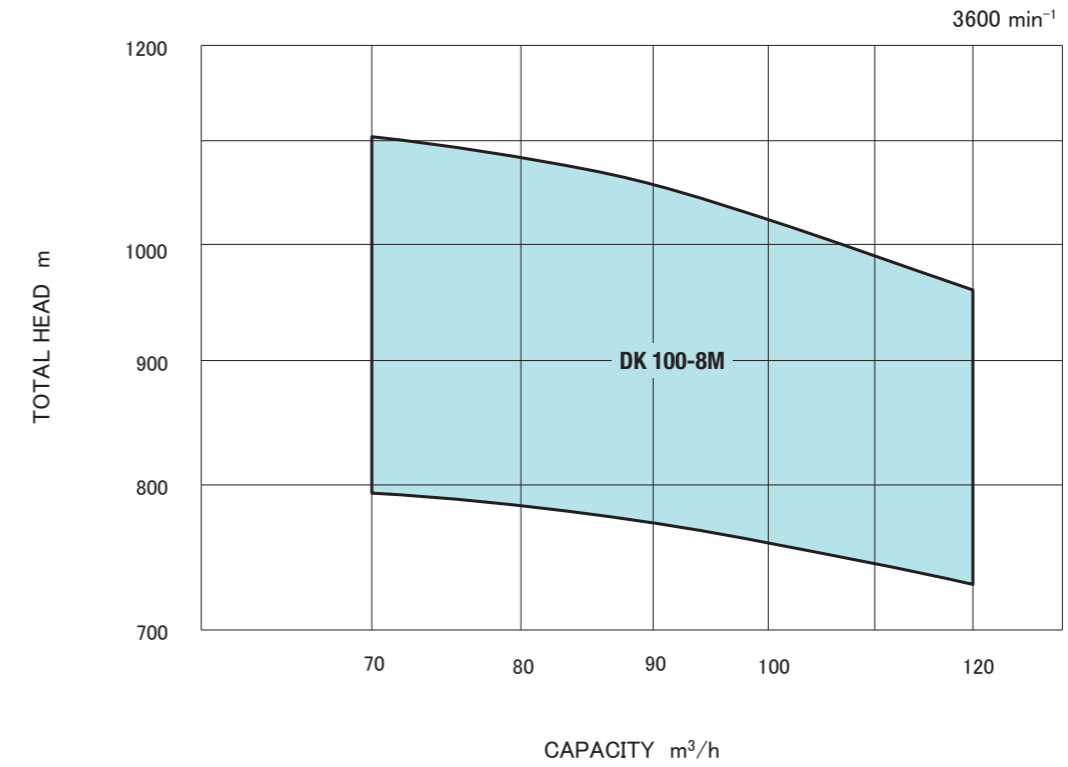
Feed pumps for main or auxiliary boilers

GENERAL CHARACTERISTICS

Item	Model	DK 100-8M
Rotation		Clockwise when viewed from the driver
Suction bore	(mm)	125
Discharge bore	(mm)	100
Lubrication system		Oil ring
LO required	(ℓ)	1.3
Cooling F.W.required	(m ³ /h)	4 (Below 36°C)
Stuffing box seal		Mechanical seal
Max.output	(kW)	520
weight	(kg)	2400
Water filled in casing	(kg)	70



PERFORMANCE CHART



DK 100-8M

