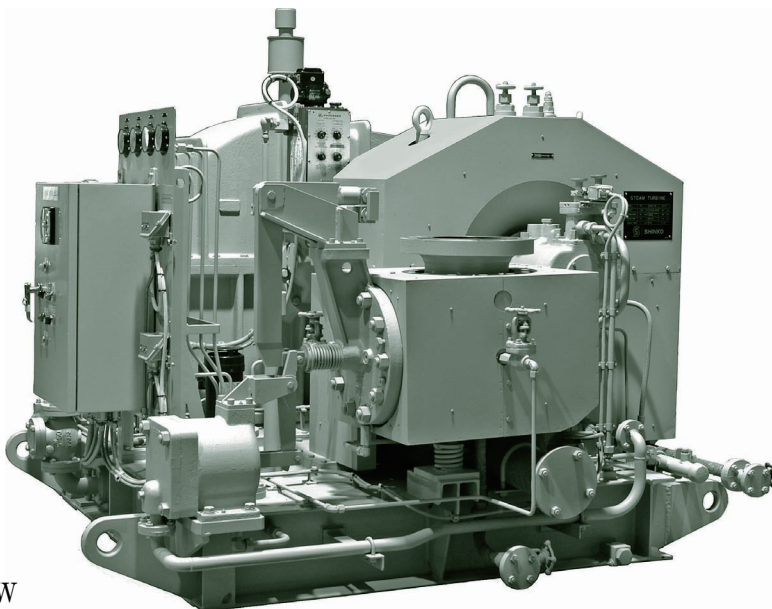


Curtis single-stage with integral reduction gear STEAM TURBINES

SHINKO RK

■ APPLICATIONS

Generators
Pumps
Others



■ SPECIFICATIONS

Max. output 3000 kW
Max. exhaust steam pressure .. 0.5 MPaG
Gland seal Labyrinth packing
Lubrication system Forced lubrication

■ GENERAL CHARACTERISTICS

Item	Model	RK 2
Max. output	(kW)	3000
Max. speed (turbine shaft)	(rpm)	7000
Speed (output shaft)	(rpm)	870 ~ 2000
Rotation of output shaft		CCW facing turbine toward driven machine
Max. inlet steam pressure	(MPaG)	3.3
Max. inlet steam temperature	(°C)	425
Max. exhaust steam pressure	(MPaG)	0.5
Steam inlet bore	(mm)	200
Steam exhaust bore	(mm)	500
Lubrication system		Forced lubrication
Main LO pump	(m ³ /h x MPaG)	10 × 0.2
Prim. LO pump	(m ³ /h x MPaG)	6 × 0.04
Governor		Woodward UG or PG
Weight (with baseplate)	(kg)	4700

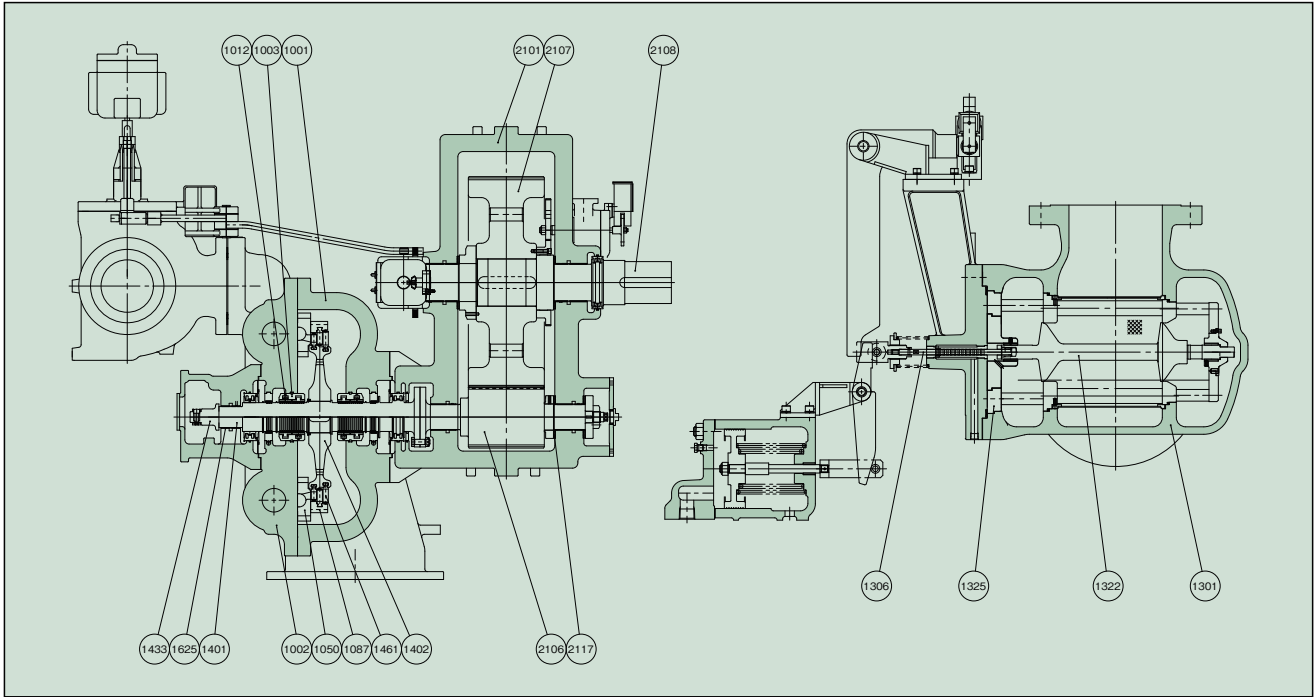
● Governor

Max. speed regulation 0.5%, 0 ~ 4 %
Max. speed variation ±0.25%
Max. speed rise 7%
Speed range +5 ~ -50%
NEMA class D

● Emergency Trip Device

Overspeed trip 115% of rated speed
Low LO pressure trip Below 0.05 MPaG

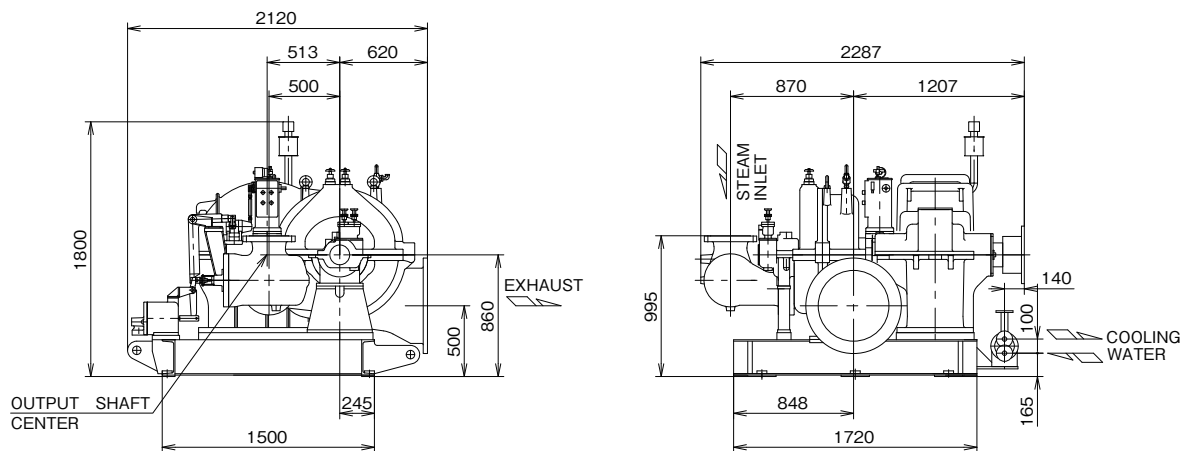
DESIGN & MATERIALS



PART NO.	NAME OF PART	MATERIAL		REQ.NO. FOR 1 TURBINE	PART NO.	NAME OF PART	MATERIAL		REQ.NO. FOR 1 TURBINE
		NAME	JIS				NAME	JIS	
1001	TURBINE CASING	CAST STEEL	SCPH2	1SET	1401	TURBINE SHAFT	FORGED STEEL	SF540A	1
1002	STEAM CHEST	〃	〃	1SET	1402	DISC ROTOR	Ni-Cr STEEL	SNC836	1
1003	PACKING CASE	CARBON STEEL	S35C	1SET	1433	OVERSPEED TRIP SHAFT	CARBON STEEL	S35C	1
1012	LABYRINTH PACKING	Ni-Br CASTING		4SETS	1461	MOVING BLADE	STAINLESS STEEL	SUS410J1	1SET
1050	NOZZLE	STAINLESS STEEL	SUS403	1	1625	BEARING METAL	WHITE METAL WITH STEEL	WJ2 S25C	1SET
1087	STATIONARY BLADE SEAT	STEEL	SS400	1	2101	REDUCTION GEAR CASING	CAST IRON	FC200	1SET
1301	GOVERNOR VALVE CASING	CAST STEEL	SCPH2	1	2106	PINION & SHAFT	Ni-Cr-Mo STEEL	SNCM439	1
1306	GOVERNOR VALVE STEM	STELLITE		1	2107	WHEEL	Cr-Mo STEEL	SCM440	1
1322	GOVERNOR VALVE	STAINLESS STEEL	SUS420J2	1	2108	OUTPUT SHAFT	FORGED STEEL	SF540A	1
1325	GOVERNOR VALVE LINER	〃	SUS403	1	2117	THRUST BEARING METAL	WHITE METAL WITH STEEL	WJ2 S25C	1SET

OUTLINE DIMENSIONS

Dimensions : mm



SHINKO IND.LTD.