

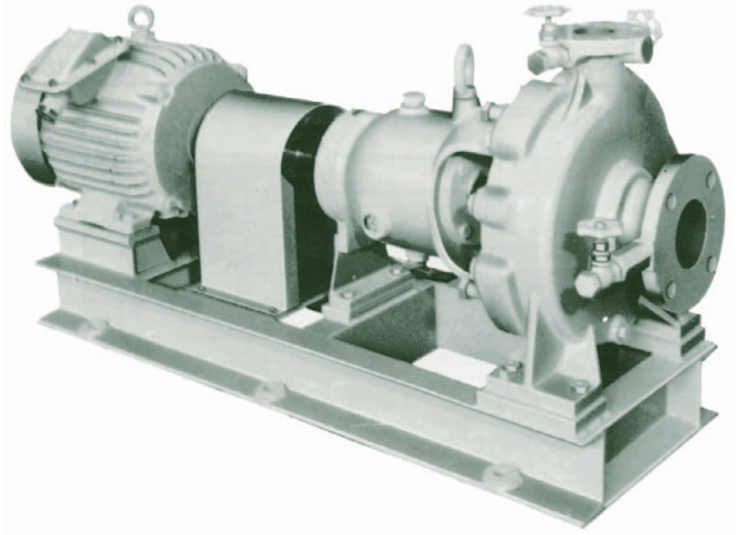
# Horizontal single-stage single-suction CENTRIFUGAL PUMPS

**SHINKO**  
**GHJ**

## ■ APPLICATIONS

GHJ centrifugal pumps are designed in accordance with ISO standards 2858-1975 and are widely used for general industries.

General cooling pumps  
Deaerator feed pumps  
Refinery service pumps  
Petro-chemical pumps  
Pulp pumps  
Other general use



## ■ SPECIFICATIONS

Total head ..... 5 to 150m  
Temperatures ..... Below 160°C

## ■ DESIGN

### Impeller

The impeller is either closed or semi-open depending on the kinds of liquids to be handled.

### Bearings

63-type ball bearings are used on the pump side. 64-type ball bearings are used on the coupling side with a closed impeller, and 73-type ball bearings with a semi-open impeller.

### Stuffing Box Jacket

If the temperature of the handling liquid is over 100 deg C, the pump is cooled by placing a jacket around the stuffing box.

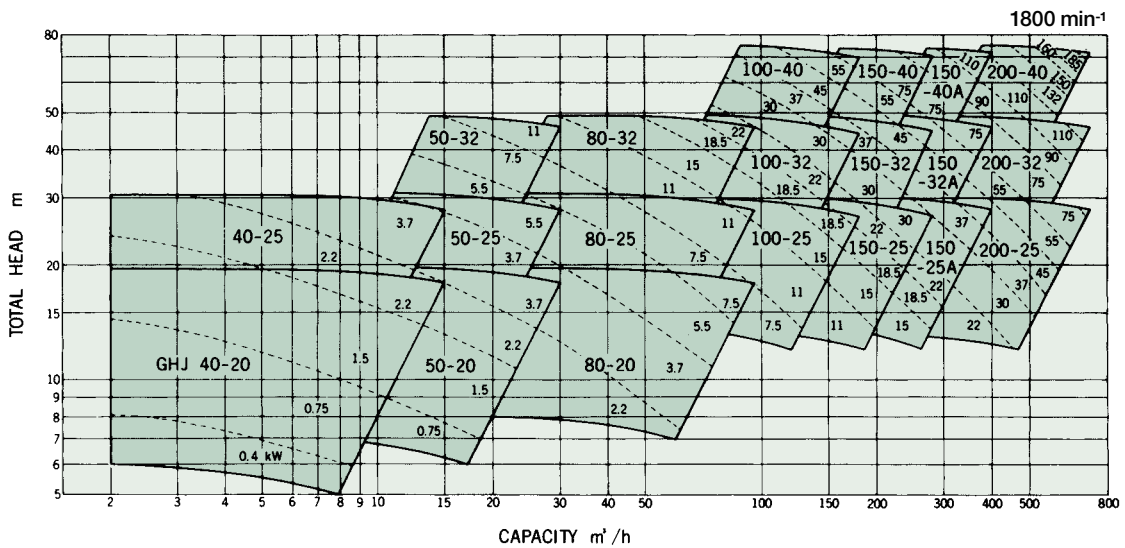
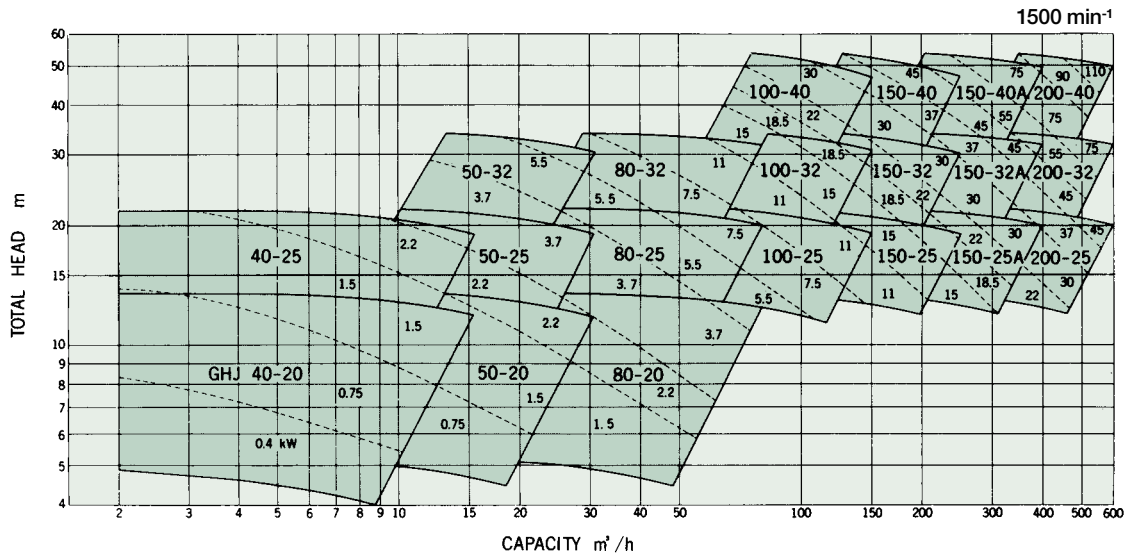
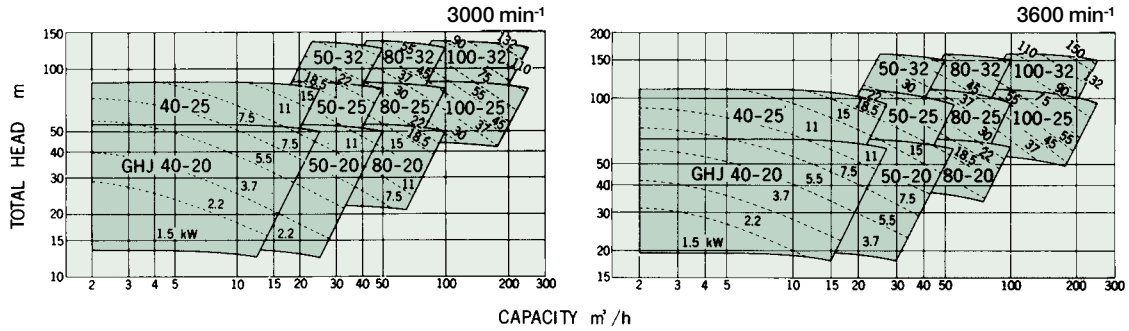
### Method of Supporting Pump Body

If the temperature of liquid handled is over 120 deg C, the pump casing should be externally supported on both sides in the center of the pump by installing a leg on the baseplate.

Model	Impeller	Bearing		Cooling device for stuffing box	Method of supporting pump casing
		Pump side	Coupling side		
GHJ	Closed type	63-type	64-type	None	Foot-support
GHJ-C	〃	〃	〃	Provided	Center-support
GHJ-O	Semi-open type	〃	73-type	None	Foot-support
GHJ-OC	〃	〃	〃	Provided	Center-support

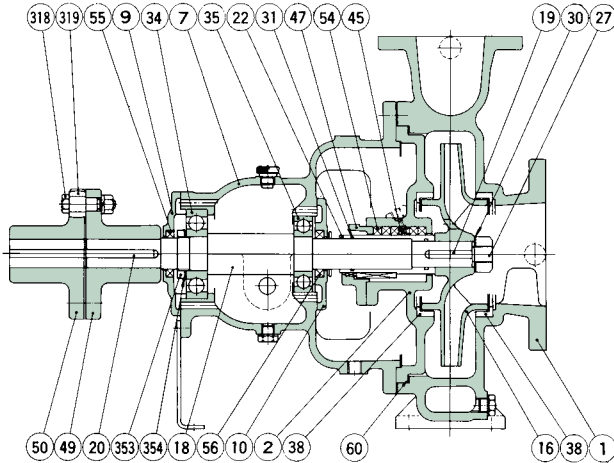
## GENERAL CHARACTERISTICS

Item	Model	GHJ 40	GHJ 50	GHJ 80	GHJ 100	GHJ 150	GHJ 150A	GHJ 200
Rotation		Clockwise when viewed from the driver						
Suction bore	(mm)	50	80	100	150	200	200	250
Discharge bore	(mm)	40	50	80	100	150	150	200
Ball bearings at coupling side		Single row deep groove (64 type) or angular contact (73 type)						
Ball bearings at opposite side		Single row deep groove (63 type)						
Lubrication system		Oil bath (turbine oil ISO VG 56~68)						
Stuffing box seal		Gland packing or mechanical seal						
Weight with baseplate	(kg)	107~145	111~215	163~269	237~348	281~394	360~444	522~672

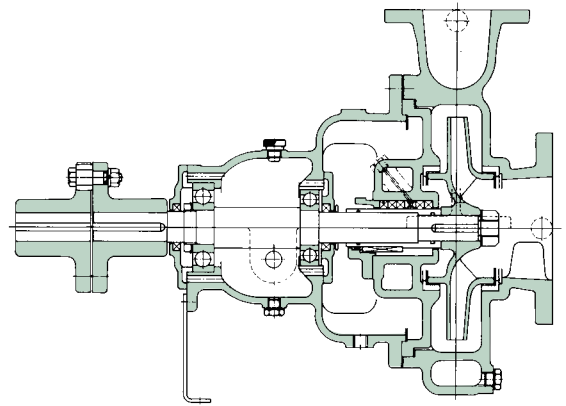


## DESIGN & STANDARD MATERIALS

**GHJ (Standard)**

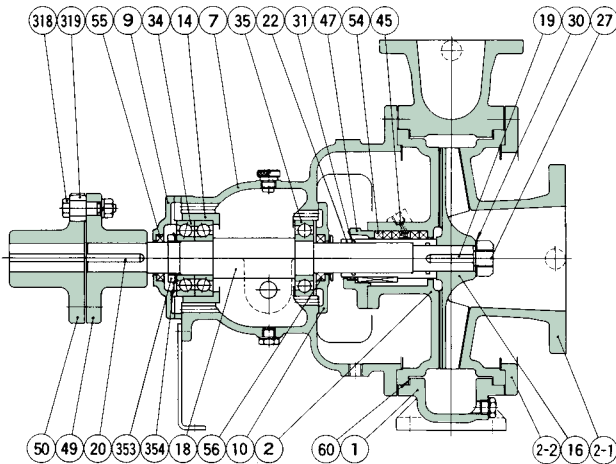


**GHJ-C (Center support, stuffing box jacket)**

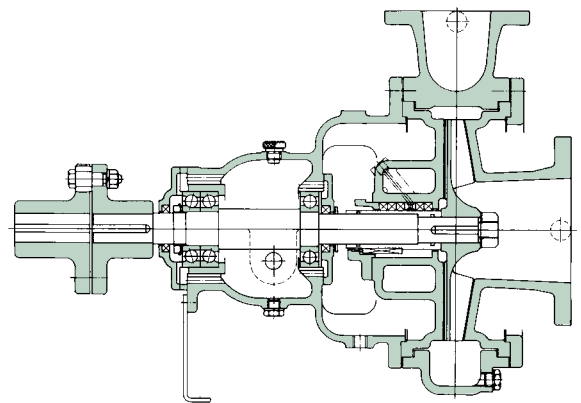


PART NO.	NAME OF PART	MATERIAL		REQ.NO. FOR 1 PUMP	PART NO.	NAME OF PART	MATERIAL		REQ.NO. FOR 1 PUMP
		NAME	JIS				NAME	JIS	
1	VOLUTE CASING	CAST IRON	FC200	1	34, 35	BALL BEARING	SPECIAL STEEL		2
2	VOLUTE COVER	"	"	1	38	MOUTH RING	BRONZE	CAC403	2
7	BEARING HOUSING	"	"	1	45	SEALING RING	SYNTHETIC RESIN		1
16	IMPELLER	PHOSPHOR BRONZE	CAC502A	1	47	GLAND	BRONZE	CAC406	1
18	IMPELLER SHAFT	STAINLESS STEEL	SUS403	1	49, 50	COUPLING	DUCTILE CAST IRON	FCD400	2
22	SLEEVE	"	"	1	54	GLAND PACKING	CARBONIZED FIBER		1 SET
27	IMPELLER NUT	"	SUS304	1	318	COUPLING BOLT & NUT	STEEL	SS400	1 SET
30	WASHER	"	"	1	319	COUPLING RING	RUBBER		1 SET

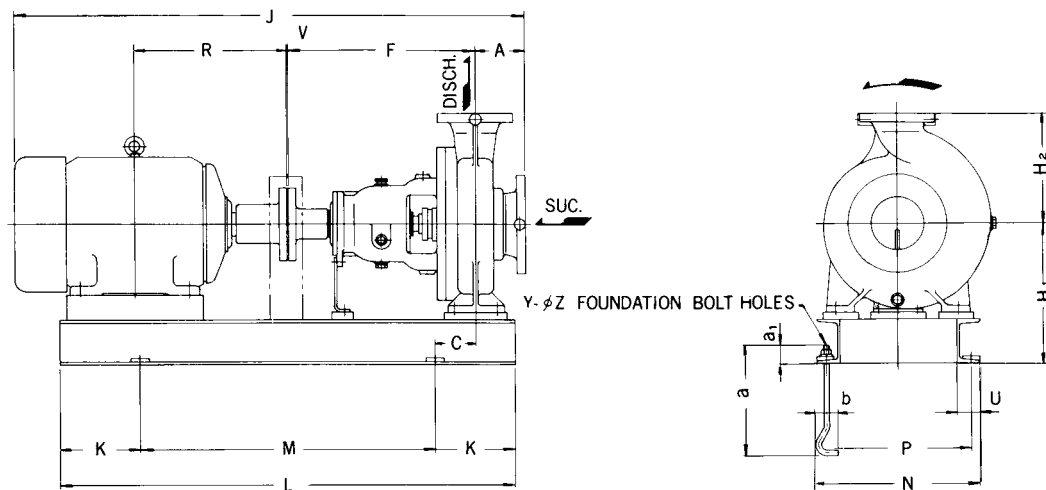
**GHJ-O (Semi-open impeller)**



**GHJ-OC (Semi-open impeller, center support, stuffing box jacket)**



PART NO.	NAME OF PART	MATERIAL		REQ.NO. FOR 1 PUMP	PART NO.	NAME OF PART	MATERIAL		REQ.NO. FOR 1 PUMP
		NAME	JIS				NAME	JIS	
1	VOLUTE CASING	CAST IRON	FC200	1	30	WASHER	STAINLESS STEEL	SUS304	1
2	VOLUTE COVER	"	"	1	34, 35	BALL BEARING	SPECIAL STEEL		2
2-1	VOLUTE COVER	"	"	1	45	SEALING RING	SYNTHETIC RESIN		1
2-2	VOLUTE COVER	"	"	1	47	GLAND	BRONZE	CAC406	1
7	BEARING HOUSING	"	"	1	49, 50	COUPLING	DUCTILE CAST IRON	FCD400	2
16	IMPELLER	PHOSPHOR BRONZE	CAC502A	1	54	GLAND PACKING	CARBONIZED FIBER		1 SET
18	IMPELLER SHAFT	STAINLESS STEEL	SUS403	1	318	COUPLING BOLT & NUT	STEEL	SS400	1 SET
22	SLEEVE	"	"	1	319	COUPLING RING	RUBBER		1 SET
27	IMPELLER NUT	"	SUS304	1					



mm

Model	Bore		Motor frame NO.	A	C	F	H <sub>1</sub>	H <sub>2</sub>	J	K	L	M	N	P	R	U	V	Y	Z	a	a <sub>1</sub>	b	Weight kg	
	Suc.	Disch.																					Pump	Base plate
GHJ 40-20	50	40	90L	100	55	385	265	180	816	115	700	470	335	295	168.5	42.5	4	4	16	315	40	63	72	35
			160M	100	90	385	265	180	1092	150	910	610	385	345	323	42.5	4	4	16	315	40	63	72	60
40-25	50	40	90L	100	57.5	500	285	225	931	130	820	560	385	345	168.5	42.5	4	4	16	315	40	63	80	55
			160L	100	97.5	500	285	225	1251	170	1080	740	385	345	345	42.5	4	4	16	315	40	63	80	65
50-20	80	50	90L	100	55	385	265	200	816	115	700	470	335	295	168.5	42.5	4	4	16	315	40	63	76	35
			160L	100	90	385	265	200	1136	150	950	650	385	345	345	42.5	4	4	16	315	40	63	76	60
50-25	80	50	132S	125	77.5	500	285	225	1078	150	920	620	385	345	239	42.5	4	4	16	315	40	63	84	60
			180L	125	117.5	500	285	225	1369	190	1150	770	385	345	400.5	42.5	4	4	16	315	40	63	84	70
50-32	80	50	132M	125	77.5	500	330	280	1116	150	950	650	385	345	258	42.5	4	4	16	315	40	63	120	60
			225S	125	117.5	500	340	280	1504.5	190	1190	810	485	440	432	52.5	4	4	20	400	45	80	120	95
80-20	100	80	112M	125	57.5	500	285	250	1012	130	870	610	385	345	200	42.5	4	4	16	315	40	63	108	55
			180L	125	117.5	500	285	250	1369	190	1150	770	385	345	400.5	42.5	4	4	16	315	40	63	108	70
80-25	100	80	132M	125	60	500	340	280	1116	150	970	670	465	425	258	42.5	4	4	16	315	40	63	132	80
			200L	125	110	500	340	280	1431.5	200	1210	810	485	440	425.5	52.5	4	4	20	400	45	80	132	95
80-32	100	80	132M	125	80	530	365	315	1146	170	1000	660	465	425	258	42.5	4	4	16	315	40	63	164	85
			250M	125	140	530	400	315	1634	230	1360	900	500	450	512.5	65	4	4	24	500	55	100	164	105
100-25	150	100	132M	140	80	530	340	280	1161	170	1000	660	465	425	258	42.5	4	4	16	315	40	63	152	85
			250M	140	140	530	400	280	1649	230	1360	900	500	450	512.5	65	4	4	24	500	55	100	152	105
100-32	150	100	180M	140	100	530	365	315	1350.5	190	1130	750	465	425	351.5	42.5	4	4	16	315	40	63	168	90
			315S	140	140	530	495	315	1780	230	1460	1000	650	600	589	75	4	4	24	500	55	100	168	180
100-40	150	100	180M	140	80	530	390	355	1350.5	190	1150	770	585	545	351.5	42.5	4	4	16	315	40	63	208	120
			250S	140	120	530	430	355	1611	230	1340	880	520	470	493.5	65	4	4	24	500	55	100	208	110
150-25	200	150	132M	140	80	530	365	355	1161	170	1000	660	465	425	258	42.5	4	4	16	315	40	63	196	85
			180L	140	110	530	365	355	1414	200	1240	840	485	440	400.5	52.5	4	4	20	400	45	80	196	100
150-32	200	150	180M	140	80	530	390	355	1350.5	190	1150	770	585	545	351.5	42.5	4	4	16	315	40	63	212	120
			225S	140	90	530	390	355	1491	270	1260	860	605	560	432	52.5	4	4	20	400	45	80	212	130
150-40	200	150	180M	140	80	530	425	400	1350.5	190	1150	770	585	545	351.5	42.5	4	4	16	315	40	63	264	120
			250M	140	120	530	465	400	1649	230	1370	910	520	470	512.5	65	4	4	24	500	55	100	264	115
150-25A	200	150	180M	160	80	530	390	375	1370.5	190	1150	770	585	545	351.5	42.5	4	4	16	315	40	63	240	120
			200L	160	90	530	390	375	1496.5	200	1260	860	605	560	425.5	52.5	4	4	20	400	45	80	240	130
150-32A	200	150	180M	160	90	670	425	400	1510.5	200	1290	890	605	560	351.5	52.5	4	4	20	400	45	80	272	130
			250S	160	120	670	465	400	1771	230	1480	1020	570	520	493.5	65	4	4	24	500	55	100	272	130
150-40A	200	150	225S	160	120	670	425	450	1651	230	1400	940	625	575	432	62.5	4	4	24	500	55	100	304	135
			280M	160	160	670	465	450	1899	270	1610	1070	580	530	569.5	65	4	4	24	500	55	100	304	140
200-25	250	200	180M	200	90	670	465	440	1550.5	200	1290	890	605	560	351.5	52.5	4	4	20	400	45	80	392	130
			250M	200	120	670	505	440	1849	230	1520	1060	520	470	512.5	65	4	4	24	500	55	100	392	120
200-32	250	200	225S	200	120	750	505	490	1772	230	1480	1020	570	520	432	65	5	4	24	500	55	100	432	130
			280M	200	160	750	505	490	2020	270	1690	1150	580	530	569.5	65	5	4	24	500	55	100	432	145
200-40	250	200	225S	200	120	750	505	540	1772	230	1480	1020	570	520	432	65	5	4	24	500	55	100	472	145
			315M	200	160	750	530	540	2112	300	1750	1150	650	600	614.5	75	5	4	24	500	55	100	472	200

**SHINKO IND.LTD.**