

Horizontal double-suction HIGH VACUUM PUMPS

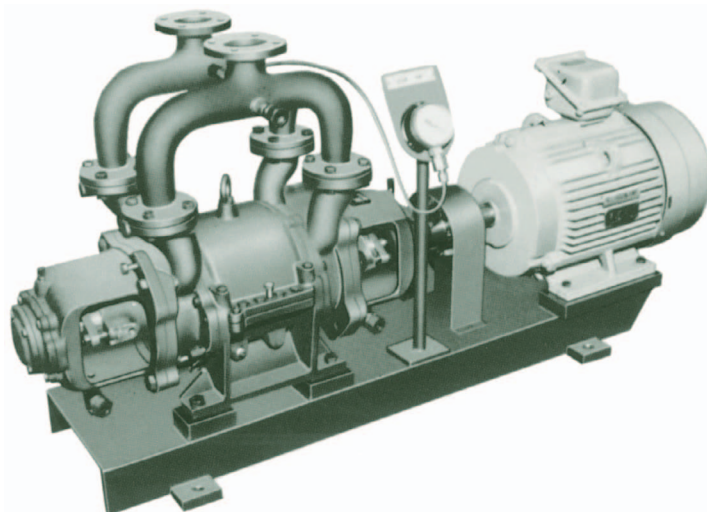
SHINKO EL

APPLICATIONS

Condenser extraction pumps

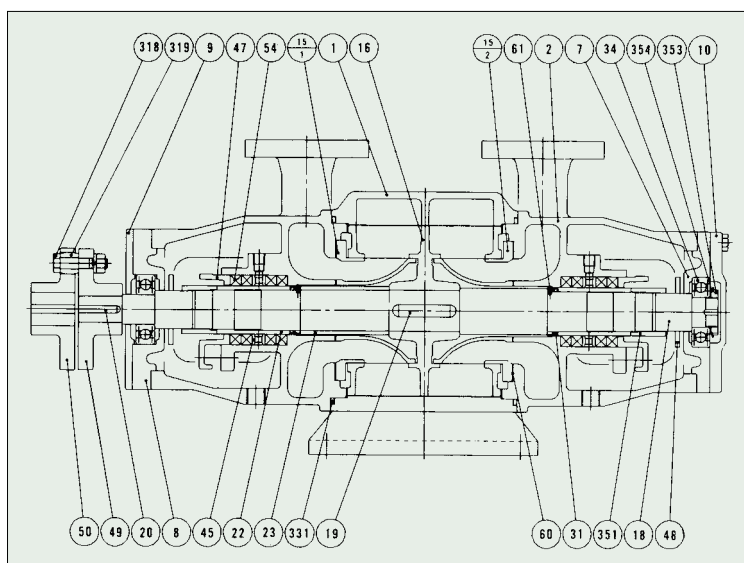
SPECIFICATIONS

Maximum vacuum 700 mmHg



DESIGN & STANDARD MATERIALS

PART NO.	NAME OF PART	MATERIAL		REQ.NO. FOR 1 PUMP
		NAME	JIS	
1	PUMP CASING	CAST IRON	FC200	1
2	PUMP COVER	"	"	2
7, 8	BEARING CASE	"	"	2
9	BEARING COVER	STEEL	SS400	1
10	BEARING COVER	CAST IRON	FC200	1
15	PORT CYLINDER	PHOSPHOR BRONZE	CAC502A	1
16	RUNNER	STAINLESS STEEL	SCS13	1
18	RUNNER SHAFT	"	SUS403	1
19	RUNNER KEY	"	SUS304	1
20	COUPLING KEY	CARBON STEEL	S55C	1
22	SLEEVE	STAINLESS STEEL	SUS403	2
31	PACKING	RUBBER		2
34	BALL BEARING	SPECIAL STEEL		2
45	SEALING RING	SYNTHETIC RESIN		2
47	GLAND	BRONZE	CAC406	2
48	FLINGER	RUBBER		2
49, 50	COUPLING	DUCTILE CAST IRON	FCD400	2
54	GLAND PACKING	CARBONIZED FIBER		2 SETS
61	PIN	PHOSPHOR BRONZE	C5191W	2
318	COUPLING BOLT & NUT	STEEL	SS400	1 SET
319	COUPLING RING	RUBBER		1 SET
331	PACKING	RUBBER		2
351	SLEEVE NUT	STAINLESS STEEL	SUS304	2
353	BEARING NUT	STEEL	SS400	1
354	BEARING WASHER	"	SS400	1

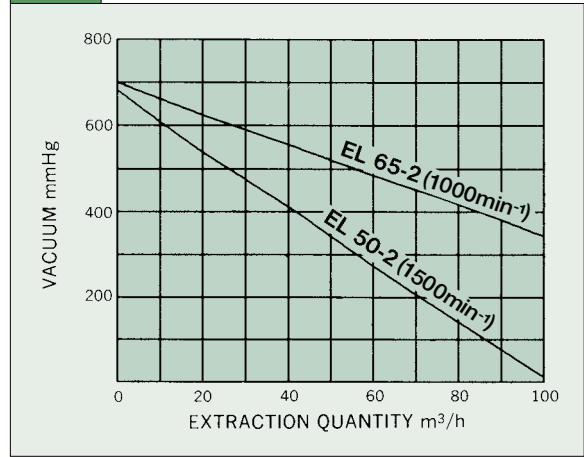


GENERAL CHARACTERISTICS

Item	Model	EL 50-2	EL 65 EL 65-2
Type		Double suction	
Rotation		Clockwise when viewed from the driver	
Extraction quantity (m ³ /h)		8(4)	11(11)
Vacuum at inlet (mmHg)		650	650
Motor (kW)		7.5	11
Inlet bore (mm)		50	65
Outlet bore (mm)		50	65
Sealing water required (ℓ/min)		17	21
Weight with baseplate (kg)		250	500

() shows under operation with 50Hz

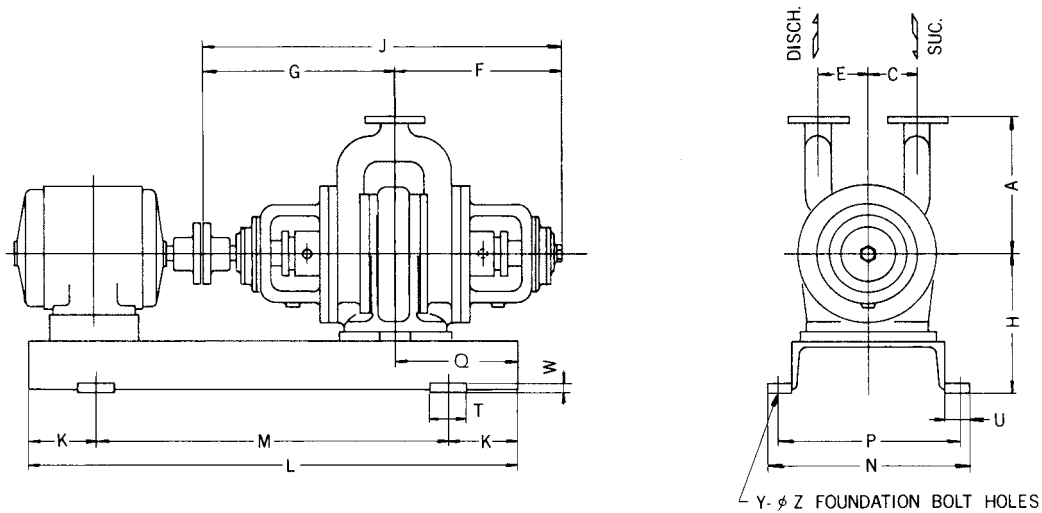
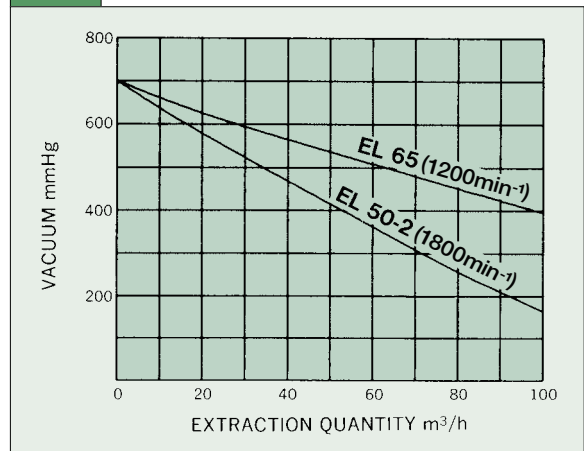
50Hz



The extraction quantity depends on the steam flow and vacuum. This relation is shown on the table below:

Vacuum	Model	EL 50-2	EL 65 EL 65-2
650 mmHg		32000 kg/h	45000 kg/h
600 "		46000 "	65000 "
550 "		61000 "	85000 "
500 "		75000 "	105000 "
450 "		90000 "	126000 "
400 "		105000 "	145000 "
350 "		120000 "	168000 "

60Hz



Model	A	C	E	F	G	H	J	K	L	M	N	P	Q	T	U	W	Y	Z
EL 50-2	460	100	100	345	393	290	738	150	950	650	400	360	150	75	50	20	4	19
EL 65	535	120	120	412	485	380	897	150	1200	900	410	370	240	100	65	25	4	19
EL 65-2	535	120	120	425	485	380	910	150	1200	900	410	370	240	100	65	25	4	19